

EENet services

DC-Net seminar

Tallinn, 13-14 January 2011

Mihkel Kraav

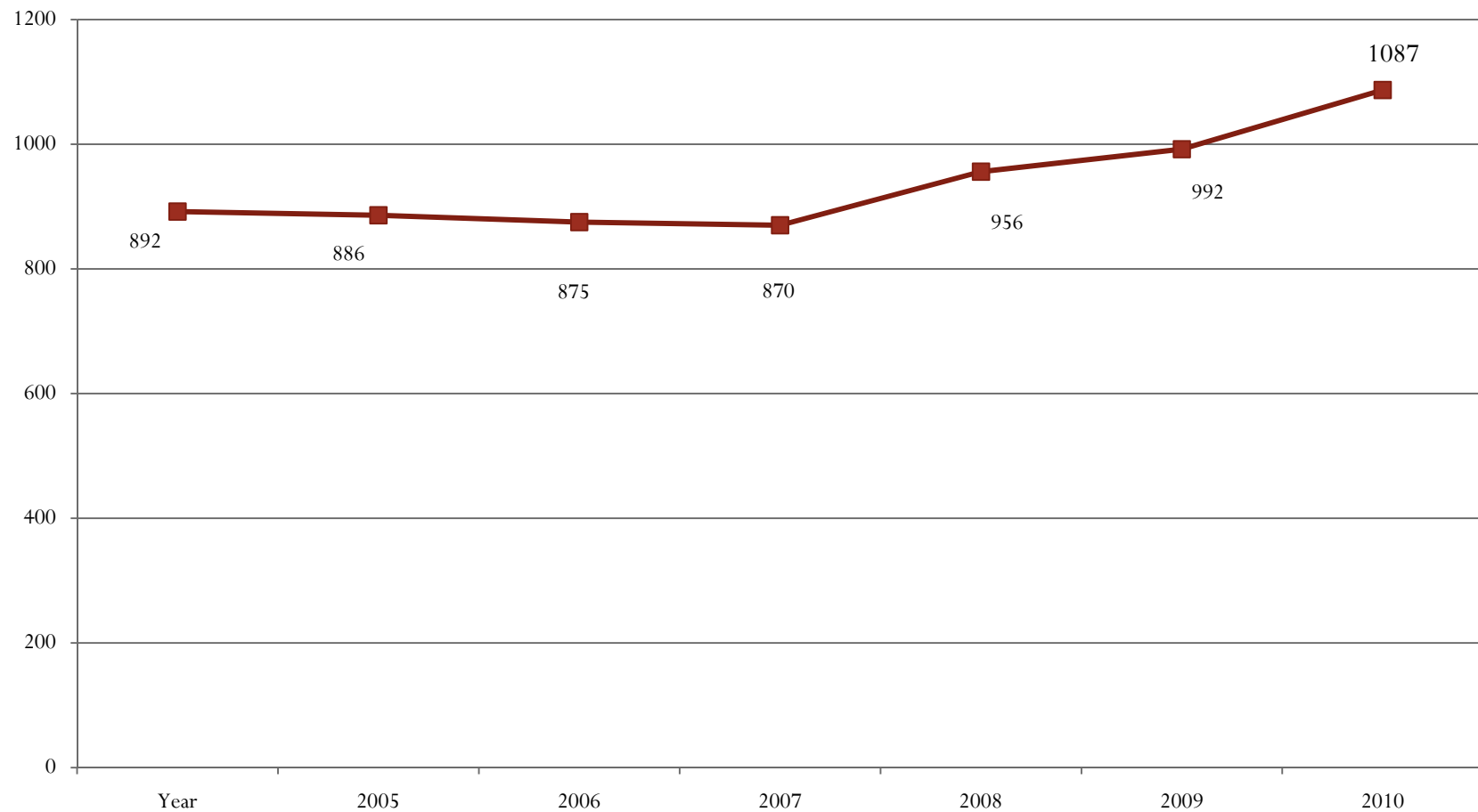
What is EENet?

- Estonian NREN, established in 1993
- Situated in Tartu, 20 employees
- Governmental institution (under Ministry of Research and Education)
- Financed primarily from the state budget, also by grants from EU (GÉANT, BalticGrid...) and others (Tiger Leap Foundation)

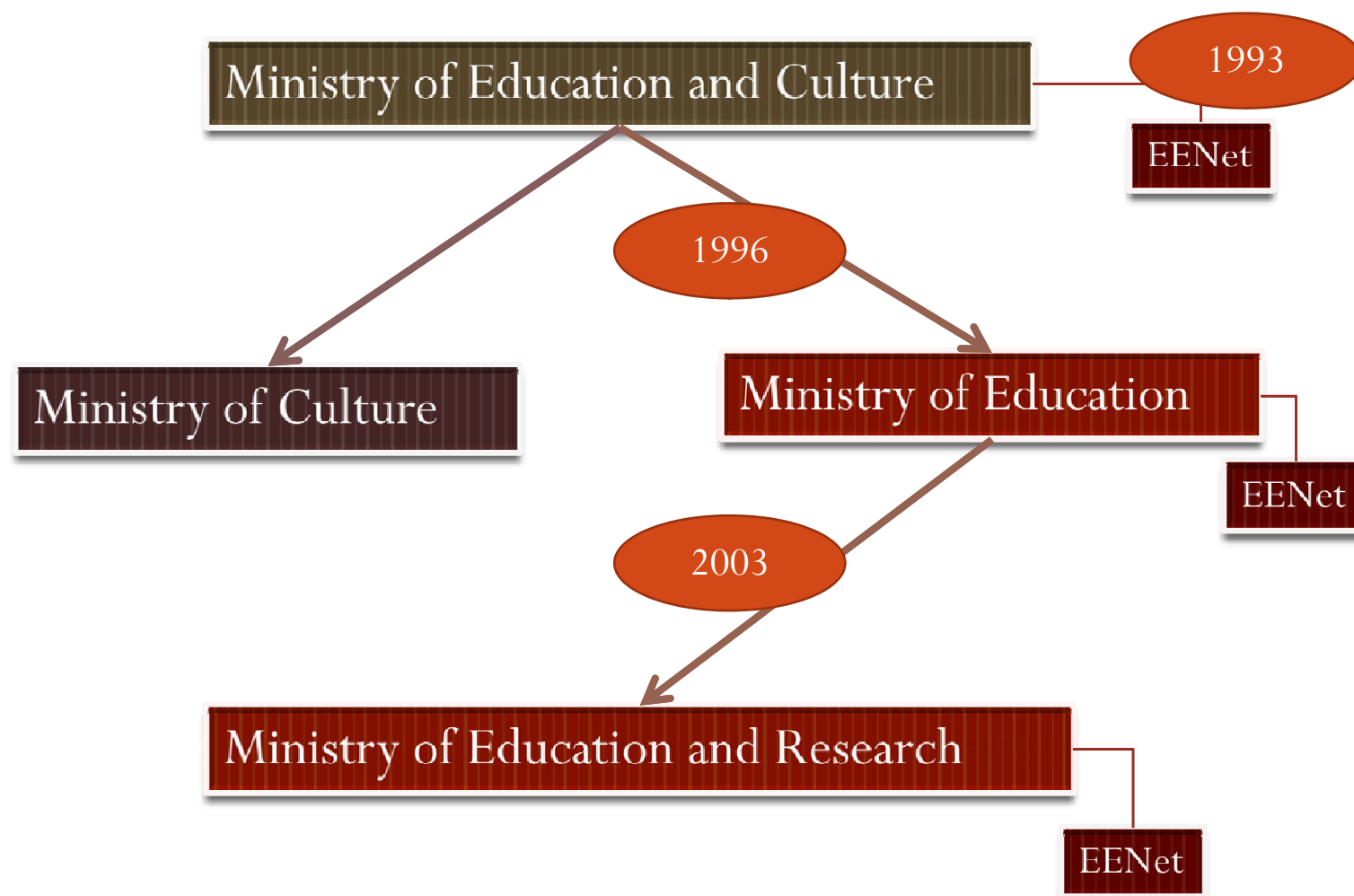


Estonian Educational and Research Network

Number of EENet customers at the end of the year



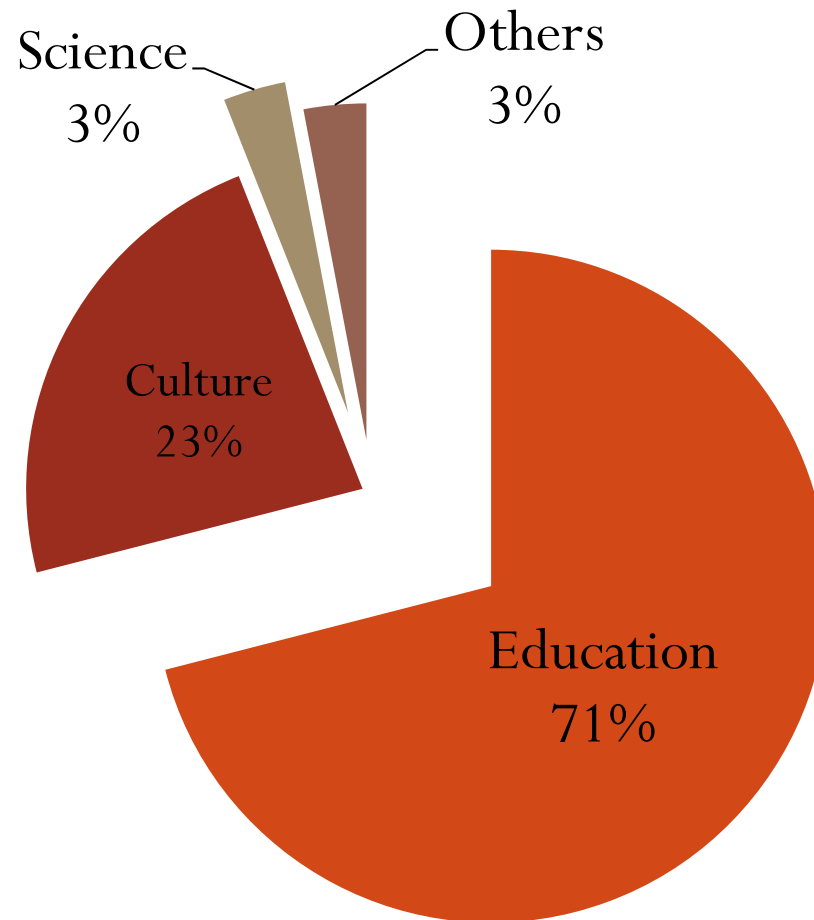
Changes of EENet's location in Estonian state



Who can be EENet's customers?

- Regulated by the decision of EENet's board (29. June 2005)
- Organizations whose main field is education, R&D or culture
 - Universities, research institutes, primary and secondary schools, kindergartens, museums, libraries, public archives, theatres, etc.
- Organisations can be owned by state (National Library), municipality (most schools) or private institution (private university)

Structure of EENet's customers (2009)



Well known services of EENet

- Internet – connection via fiber or leased line
- Webhosting and HAVIKE
- Learning materials
- Different e-learning environments
- e-mail accounts
- Domain name registering – *.lib.ee*, *.org.ee*, *.edu.ee...* and *.ee*

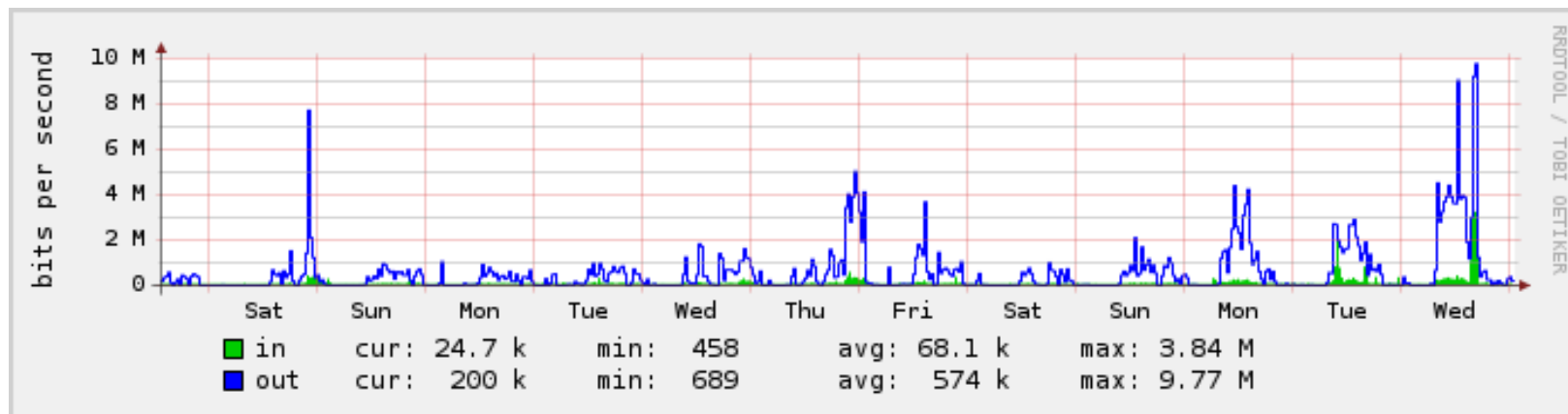
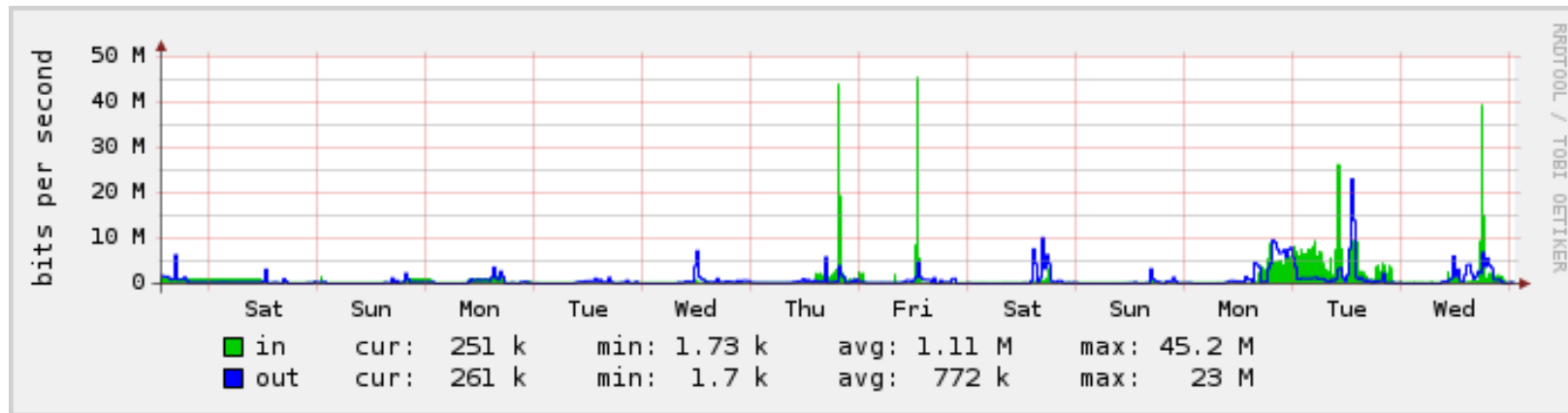
Other services...

- Server hosting
- Eduroam
- Estonian GRID – information services and one production cluster
- Videoconferencing and Estonian Public Broadcasting programs in Internet
- Wildlife online cameras (wild boars, eagle, stork, seals, etc.)
- NTP, FTP, etc.

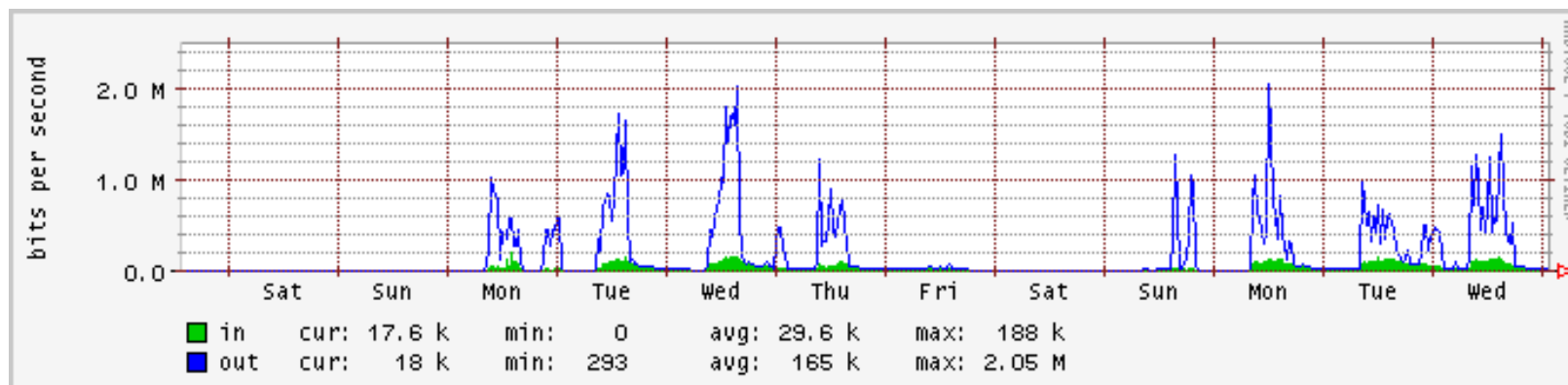
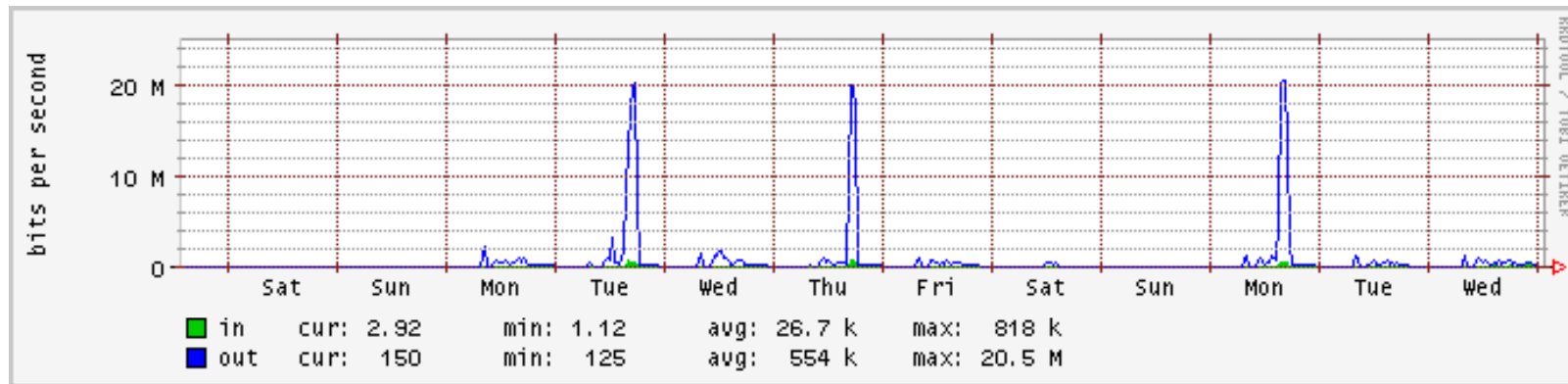
Expectations to internet connection speed in 3 years (2009 survey)

Culture	10Mbps
Schools	100Mbps
R&D	1 Gbps
Universities	10Gbps

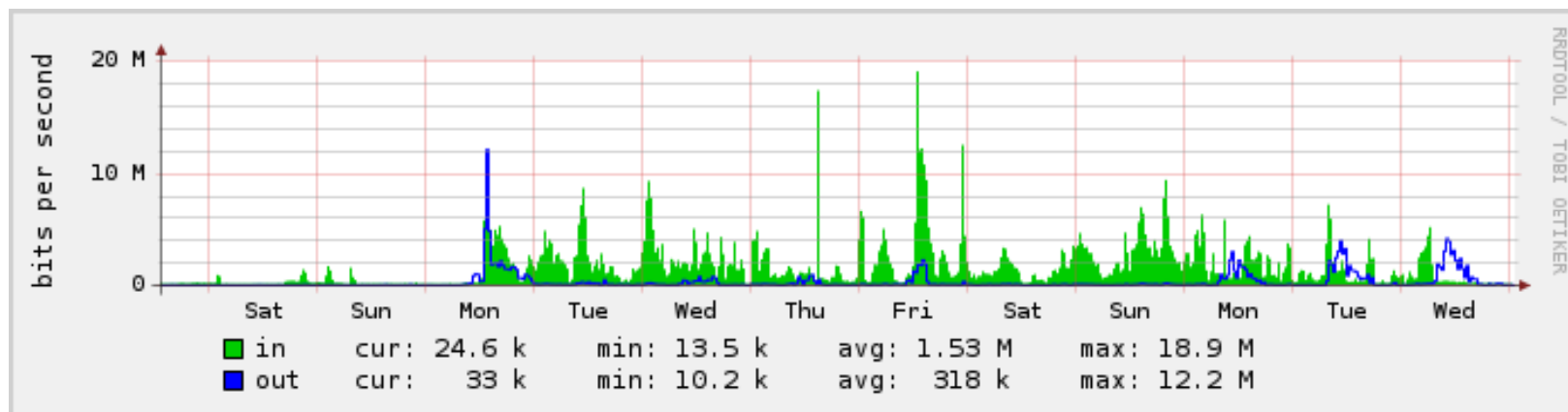
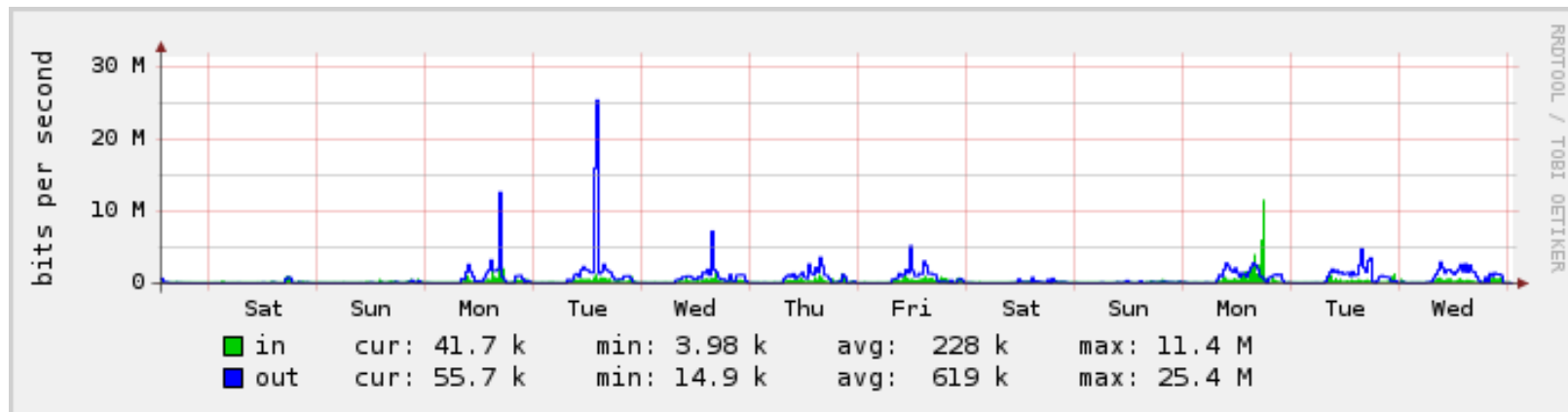
Real usage: theater Ugala vs Viljandi Maagümnaasium



Real usage: Jõgeva city library vs Narva 6. secondary school



Real usage: Estonian National Museum vs Raatuse Gümnaasium



Why would a cultural institution use EENet's services?

- There are no formal obligations
- Reasons are different, for example
 - Its fast, its reliable
 - Its organized all together by municipality
 - Its cheap
- Why not to do it?
 - EENet's POP is not available within reasonable distance
 - Its expensive

Progress...

- More fibers, more services, less slow connections
- 2 big projects are starting in 2011
 - Estonian Optical backbone (few rings will cover most counties with dark fiber lighted by EENet)
 - Estonian GRID – new computing resources as well as new and better AAA infra
- Projects already passed evaluation and will get financing from structural funds

Thank you!